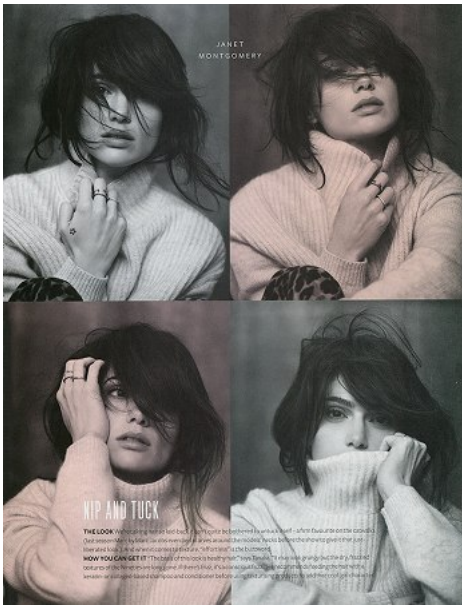


Select

MODEL MANAGEMENT

27-35 Mortimer Street London W1T 3JG women t: +44 (0) 20 7299 1300 verve t: +44 (0) 20 7284 5600 men t: +44 (0) 20 7299 1322

JANET MONTGOMERY
Height 5'6 / 168 Bust 33 / 84 B Waist 24.5 / 62 Hips 33 / 84



Select

MODEL MANAGEMENT

27-35 Mortimer Street London W1T 3JG women t: +44 (0) 20 7299 1300 verve t: +44 (0) 20 7284 5600 men t: +44 (0) 20 7299 1322

JANET MONTGOMERY
Height 5'6 / 168 Bust 33 / 84 B Waist 24.5 / 62 Hips 33 / 84