



Select
MODEL MANAGEMENT

27-35 Mortimer Street London W1T 3JG women t: +44 (0) 20 7299 1300 verve t: +44 (0) 20 7284 5600 men t: +44 (0) 20 7299 1322

JANET MONTGOMERY
Height 5'6 / 168 Bust 33 / 84 B Waist 24.5 / 62 Hips 33 / 84



Select
MODEL MANAGEMENT

27-35 Mortimer Street London W1T 3JG women t: +44 (0) 20 7299 1300 verve t: +44 (0) 20 7284 5600 men t: +44 (0) 20 7299 1322

JANET MONTGOMERY
Height 5'6 / 168 Bust 33 / 84 B Waist 24.5 / 62 Hips 33 / 84



Select
MODEL MANAGEMENT

27-35 Mortimer Street London W1T 3JG women t: +44 (0) 20 7299 1300 verve t: +44 (0) 20 7284 5600 men t: +44 (0) 20 7299 1322

JANET MONTGOMERY
Height 5'6 / 168 Bust 33 / 84 B Waist 24.5 / 62 Hips 33 / 84



Select
MODEL MANAGEMENT

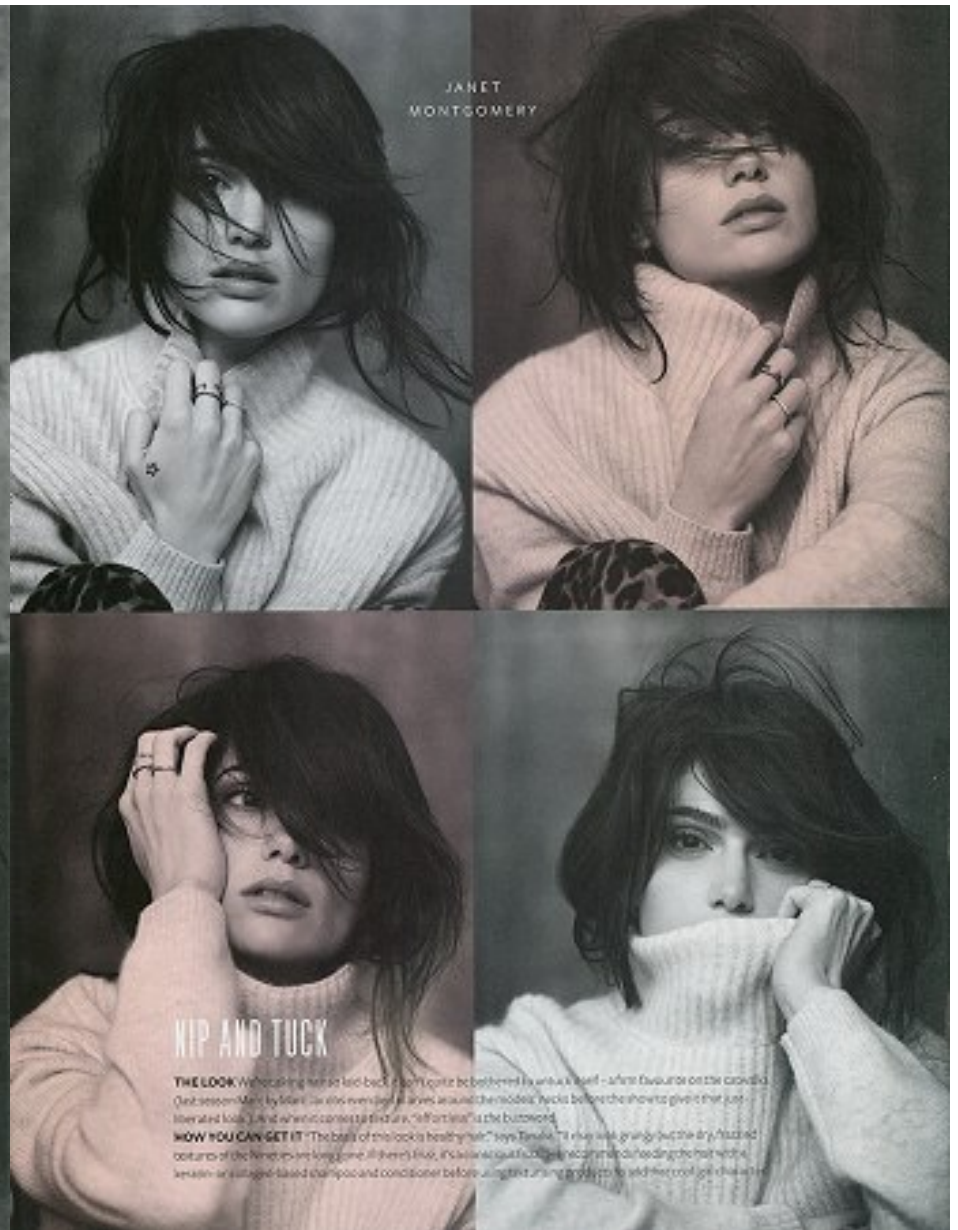
27-35 Mortimer Street London W1T 3JG women t: +44 (0) 20 7299 1300 verve t: +44 (0) 20 7284 5600 men t: +44 (0) 20 7299 1322

JANET MONTGOMERY
Height 5'6 / 168 Bust 33 / 84 B Waist 24.5 / 62 Hips 33 / 84



SAY
GOODBYE

Step away from the styling brush. Brit actress Janet Montgomery shows us how to do the new low-maintenance shaggy chic



JANET MONTGOMERY

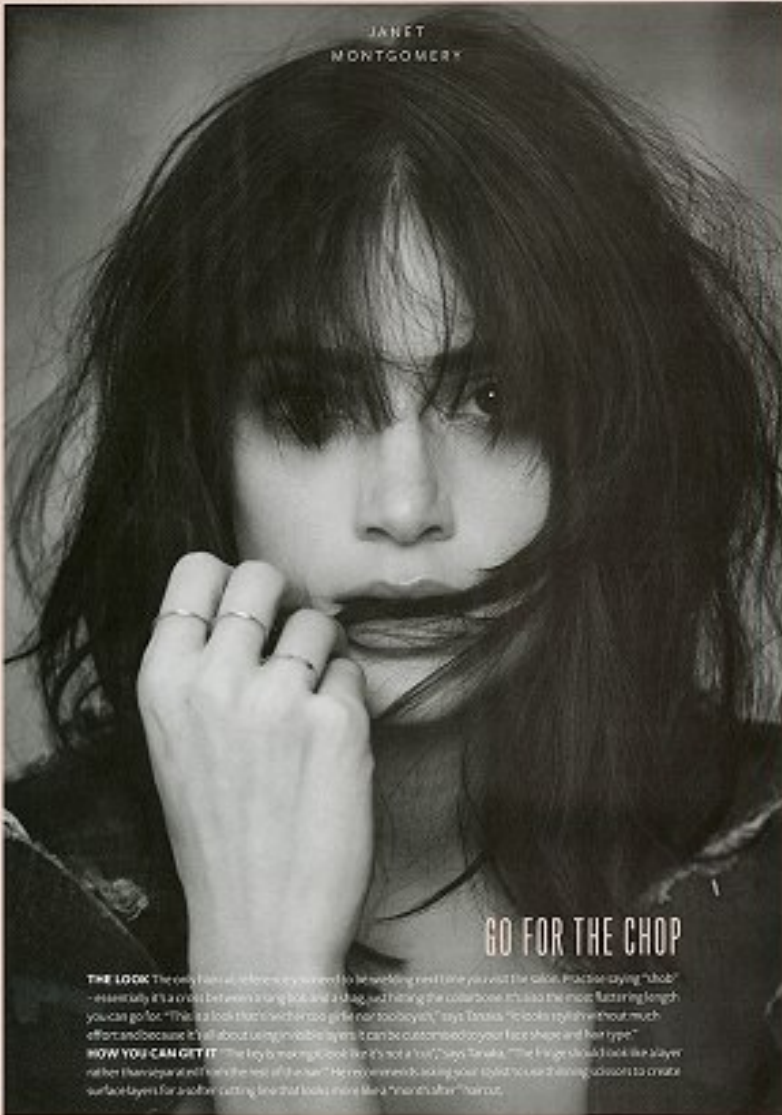
NIP AND TUCK

THE LOOK We're taking hair so laid-back it can't quite be tethered to a hairbrush - a first favourite on the catwalk. Our session: Man, by Mireia. As she evened out her waves around the middle, flicks behind the shoulders to give it that low-angled look. Sure, when it comes to the hair, "effortless" is the buzzword.
HOW YOU CAN GET IT "The base of this look is healthy hair," says Tanaka. "I like using a gentle but the dry, frizzed cuticles of the Nineties are long gone. If there's blow, it's always just a quickie, because the conditioning that we're looking for is a sulfate-based shampoo and conditioner before using that styling product to add that cool, gothic hair."

Select
MODEL MANAGEMENT

27-35 Mortimer Street London W1T 3JG women t: +44 (0) 20 7299 1300 verve t: +44 (0) 20 7284 5600 men t: +44 (0) 20 7299 1322

JANET MONTGOMERY
Height 5'6 / 168 Bust 33 / 84 B Waist 24.5 / 62 Hips 33 / 84



THE LOOK The only haircut reference you need to be bedding next time you visit the salon. Practice saying "lob" - essentially it's a cross between a long bob and a shag, and tucking the collarbone. It's also the most flattering length you can go for. "This is a look that's both a girl and a boy's cut," says Tanaka. "It looks stylish without much effort and because it's all about using visible layers it can be customised to your face shape and hair type."

HOW YOU CAN GET IT "The key to getting the look is it's not a 'lob,'" says Tanaka. "The fringe should look like a layer rather than separate and sit on the rest of the hair." He recommends using your stylist's scissor training scissors to create surface layers for a softer cutting line that looks more like a "month after" haircut.

28



Select
MODEL MANAGEMENT

JANET MONTGOMERY
Height 5'6 / 168 Bust 33 / 84 B Waist 24.5 / 62 Hips 33 / 84

27-35 Mortimer Street London W1T 3JG women t: +44 (0) 20 7299 1300 verge t: +44 (0) 20 7284 5600 men t: +44 (0) 20 7299 1322



Select
MODEL MANAGEMENT

27-35 Mortimer Street London W1T 3JG women t: +44 (0) 20 7299 1300 verve t: +44 (0) 20 7284 5600 men t: +44 (0) 20 7299 1322

JANET MONTGOMERY
Height 5'6 / 168 Bust 33 / 84 B Waist 24.5 / 62 Hips 33 / 84



Select
MODEL MANAGEMENT

JANET MONTGOMERY
Height 5'6 / 168 Bust 33 / 84 B Waist 24.5 / 62 Hips 33 / 84

27-35 Mortimer Street London W1T 3JG women t: +44 (0) 20 7299 1300 verve t: +44 (0) 20 7284 5600 men t: +44 (0) 20 7299 1322